



最珍貴的母乳，給最珍愛的寶寶

超吸感手動吸乳器

Breast Pump & Feeding Set

6

大特點

輕壓
省力

智慧
吸收

舒適
按摩

安靜
低音

操作
簡單

衛生
保護

0%
BPA
不含雙酚A

KU-5456

超吸感手動吸乳器使用說明書

Usage Instruction

為了您的安全，請您務必花費幾分鐘的時間，在充分了解本說明書之後，按照內容作正確的使用。
In order to protect your safety, please spend some times to read thought this instruction and operate the device with the direction before use.

☆ 商品推薦 ☆

NEW



150ml

KU-5924

酷咕鴨儲乳瓶-3入組

當媽媽集乳到達奶瓶刻度上限時，建議更換新的儲乳瓶來集乳，方便管理母乳容量，酷咕鴨儲乳瓶3入裝，讓媽媽能夠儲存更多珍貴的母乳。

- 奶瓶可以接上標準口徑的奶嘴，使用方便。
- 可直接裝在吸乳器上當集乳瓶，冷凍與冷藏皆方便。
- 可套上奶嘴及中蓋直接當奶瓶使用。
- 食品級PP材質，可高溫消毒殺菌。
- 可重複使用，經濟方便又衛生。

建議售價 NT250元

4 712702 487031 0

KU.KU Duckbill Storage Milk Bottle Set- 3 Bottles

When mothers have collected excess breast milk, we suggest to change a new storage milk bottle to collect breast milk in order to manage the amount of breast milk easily. KU.KU Duckbill storage milk bottle set- 3 bottles are designed for mothers to storage more breast milk.

- The milk bottle can use standard nipple.
- The milk bottle can be placed on the breast pump to used as the storage milk bottle.
- Put on the nipple and cover to be used as the feeding bottle.
- Foodstuff level PP material can be sterilized by high temperature.
- It can be repeat for use which is money saving and environment friendly.

GINI

吉尼寶貝國際股份有限公司 JINI BABY INTERNATIONAL CO.,LTD.

No.27, Lane 290, Sec.2, Jia Dong Road, Chang Hua City 500-84, Taiwan

彰化市茄苳路2段290巷27號 統一編號:12617114 原產地:台灣 Made in Taiwan

www.ku-ku.com.tw TEL : 0800-223358

◎ 母乳儲存須知 / Thawing frozen breast milk

儲存溫度

對於足月嬰兒的母親，使用何種容器可能不是太大的問題，當然還是要注意擠奶過程中的清潔，擠奶的過程中不要碰到容器的內側，擠出來的奶水放在25度室溫下八個小時，放於冰箱冷藏室(0到4度)5天內，冷凍庫(負20度)3到6個月仍是很安全，要注意不要放在冰箱的門，而是盡量放在冰箱內部，比較不會受開關門影響溫度的地方。

取出來的奶水可以室溫下退涼即可，或是將奶瓶放於溫水(不要超過60度)中回溫，絕不可用微波爐解凍。

Suggestions:

At room temperature-for 8 hours at a room temperature of 25 °C
In the refrigerator for up to 5 days at a refrigerator temperature of 0 °C to 4 °C
In the freezer for up to 2 weeks in a freezer compartment contained inside a refrigerator, for 3 to 6months inside a freezer compartment in a refrigerator with a separate freezer door, and 6 months or longer if stored in a separate deep freezer. Do not store breast milk in the freezer door rack. Milk stored in the door is exposed to a wide temperature changes due to the frequent opening and closing of the freezer door.

◎ 儲乳使用說明 / Instruction of the storage milk bottle

1. 當完成吸乳後，取下集乳瓶。
2. 蓋上奶瓶中蓋，即可當儲乳瓶使用。
3. 若要當奶瓶使用，請將奶嘴與奶瓶中上蓋順時針裝上，即可使用奶瓶餵奶。
4. 儲乳功能足將多餘母乳儲存於冰箱冷藏(24小時內使用)，需要時以熱水隔水加熱方式溫熱，即可餵食寶寶。
(提醒您：餵奶前請先測試溫度，再行餵奶動作)
5. 建議搭配酷咕鴨儲乳瓶使用，方便儲存也可免於母乳的浪費。



1. After finishing the breast milk collection, release the milk bottle.
2. Place the milk bottle then it can be use as the storage milk bottle.
3. If the storage milk bottle is used for feeding, please remove the milk storage spacer then put on the pacifier and milk bottle cover then it can be used for feeding.
4. The storage milk bottle is used to storage the excess breast milk in the fridge (use within 24 hours) and warns up by hot water to feed baby when it is needed. (Test the temperature before feeding.)
5. Ku Ku duckbill milk bottle are suggested to be used. It can be fit to the pump better, avoid the risk of fall and easy to storage.

母乳 嬰兒最理想的食物 Breast-Feeding best for babies

母乳是嬰兒最理想最甜美的食物，母乳化的奶粉也比不上母乳，吃母乳的嬰兒較健康，聰明的媽媽哺餵母乳。新生兒只有三個最基本的需要：母親溫暖的懷抱、母親乳房的食物、母親身旁的安全感。這是每個做母親都做得到的。

餵母乳對嬰兒的好處

1. 母乳是人類最自然、最合於生理需要的嬰兒食物。
2. 母乳新鮮、溫度不變又適中。
3. 可降低嬰兒的過敏症狀，如濕疹、蕁麻疹、氣喘、過敏性鼻炎等。
4. 嬰兒得感冒、腹瀉、便秘、皮膚病等的發生率及死亡率都比餵牛奶的嬰兒低，因為母乳含各種抗體，可增加抵抗力，這對愈小的嬰兒尤其重要。
5. 母乳乾淨無菌，容易消化，較少有脹氣感或不適。
6. 餵母乳的嬰兒不易發生營養不足或營養過多的情形。

重要的初乳

初乳- 是母親於產後最早所分泌量少、微黃的乳汁，含有豐富的營養與抗體，可幫助嬰兒排便，應哺餵嬰兒。

Breast-Feeding Best for Babies

The breast milk is the best food for baby even the humanized milk is not able to compare with. Baby feed by breast milk is usually grow more health then the bottle feeding baby therefore smart Mon shall chose breast-feeding.. Now born baby has three basic needs: warn embrace from Mon, the breast milk from Mon and the sense of security from Mon's company that can be done by every single mother.

The benefits from breast feeding to baby

1. Breast milk is the most nature and accord with human physical baby food.
2. Breast milk is fresh and in stable temperature.
3. Breast milk is able to reduce the symptoms of baby's allergy such as ecaema, nettle rush, asthma, allergic rhinitis and etc.
4. The possibility is lower for breast feeding baby to get cold, diarrhea, constipation, skin problem and etc then the bottle feeding one. This is due to the breast milk contained various antibody to enhance the resistance which is especially important to the baby.
5. Breast milk is clear and easy to digest which can reduce the distention and uncomfortable.
6. There are less malnutrition and over nutrition on breast feeding baby.

The important colostrum

Colostrum is the earliest breast milk lactate by mother. The amount of the colostrum is very little. The light yellow color milk contains very rich of nutrition and antibody which can help baby on digestion.

◎ 產品特點 / Product Feature

1. 輕壓省力

酷咕鴨手動吸乳器省力握把可隨時吸乳，操作簡便，組裝容易，快速減輕漲奶疼痛。

2. 智慧吸收

吸力可依媽媽習慣或需求自行控制吸乳節奏，可讓媽媽吸得更舒適。

3. 舒適按摩

花瓣形狀吸乳罩杯的矽膠墊片，能緩衝吸乳時的不適感，亦可按摩乳房刺激乳汁分泌，吸乳罩與乳房溫柔密合，舒適的頂住媽媽的乳房，發揮最佳吸乳效果。

4. 操作簡單

媽媽單手即可輕鬆操作，整體設計符合人體工學，曲線壓柄加寬設計，左右手都能輕鬆好操作，更可避免手部疲勞。

5. 安靜低音

集乳過程安靜低音，避免吵醒熟睡中的寶寶。

6. 衛生保護

貼心衛生的保護蓋設計，方便媽媽外出攜帶，暫停集奶時，亦可保護吸乳罩杯的衛生，保障寶寶食的安全。

1. Power save

KU.KU Duckbill manual breast pump with handle which save power to operate it. Easy to use and assemble. It is ideal for reducing uncomfortable for the breast feeding mother.

2. Smart suction and release

The suction can according to the mother needs to control the movement, let the mother feel very comfortable.

3. Comfortable massage

The massage cushion with embossed petal air room design that massage the area behind of nipple to stimulate the milk flow.

4. Easy to use

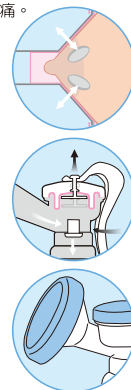
The mother only uses one hand to operate and avoid hand fatigue, whole design meets Human Ergonomics, curved handle for either hand to operate it.

5. Low sound and quiet

The baby won't interrupt during processing of breast pump because it is low sound.

6. Health protection

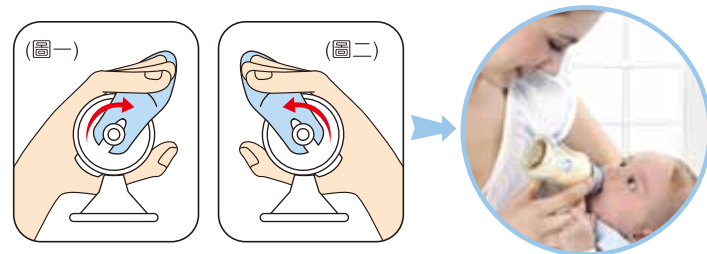
The design of breast shield cap is convenient to carry and keep the shield clean.



◎ 操作說明 / Instruction of operating

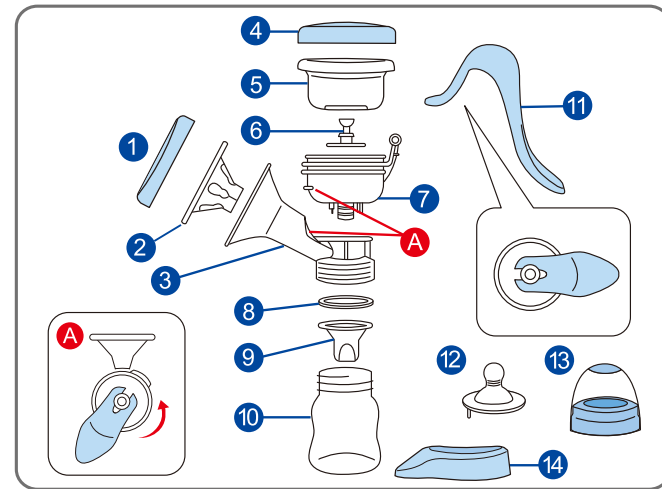
- 使用前請將雙手洗淨同時清潔乳房。
- 吸乳器使用前一定要消毒乾淨並正確組裝。
- 將吸乳器裝上集乳瓶以便收集母乳。
- 可依左手(圖一)與右手(圖二)不同位置將手動把手旋轉至媽媽感覺最舒適的角度。
- 將吸乳器確實接於乳房上，接著按壓吸乳器上的把手。
- 吸乳前請先按摩乳房，以輕快的節奏按壓把手，握把約按壓一半即可放鬆，直至乳汁流出。
- 當母乳開始流出後，則放慢按壓速度，握把按壓到底，以模仿小寶寶自然吸吮的節奏，一吸一放按壓保持相同頻率即可。
- 若有無法吸乳的現象，請檢查吸乳罩、吸乳罩墊片、吸力環與吸力環座是否密合。

- Clean both hands and breast before use.
- Breast pump must be well sterilized and assembled.
- Fit the milk bottle on the breast pump for collecting breast milk.
- The manual handle can be adjusted to the best angle for mother by turning by left hand (picture 1) and right hand (picture 2).
- Place the breast pump on the breast properly and press the handle on the pump.
- Press the handle briskly to massage the breast, press to half and release until the breast milk come out.
- Slow down the speed after the breast milk start to come out. Press down the handle and imitate the nature temple of baby's suction to keep the press and release in the same frequency.
- When it is not able to collect the milk, please Check is the pump cover, plate, suction ring and suction ring base fit properly.



吸乳完成後，可接上奶嘴當奶瓶餵食寶寶，非常方便。

◎ 手動組裝說明 / Assembling instruction of manual breast pump



- 將吸乳罩墊片 ② 置入吸乳罩 ③ 中，使其貼合。
- 將吸力環 ⑥ 由下往上裝入矽膠環座 ⑤ 中。
- 將手動專用環座 ⑦ 裝於吸乳罩上，並以旋轉方式將卡桿與吸乳罩結合 A。
- 將組合好之吸力環座 ⑤ ⑥ 裝於手動專用環座 ⑦ 上。
- 請將手動專用把手 ⑪ 前端卡在吸力環上，再將把手固定於 ⑦ 專用環座上並蓋上手動專用蓋 ④。
- 於奶瓶口放上防逆流矽膠管 ⑨ 以及奶瓶墊圈 ⑧，將奶瓶與吸乳罩轉緊。

- Place the breast pump plate ② into breast pump cover ③ and make it completely close together.
- Place the suction ring ⑥ into the silica base ⑤ from bottom to the top.
- Place the base ⑦ on the breast pump cover and turn the breast pump cover to go with the tenon A.
- After the set up, place the suction ring base ⑤ ⑥ on the manual appliance base ⑦.
- Place the manual handle front part ⑪ on the suction ring and fix the handle on the appliance base and put on the handle cover ④.
- Place the anti-back flow silica tube ⑨ and milk bottle gasket ⑧ and close the milk bottle and breast pump cover.

◎ 材質說明 / Materials

品 名 Contents	數量 Amount	材 質 Material	品 名 Contents	數量 Amount	材 質 Material
① 保護蓋 breast shield cap	1 個/pc	PP 110°C~-20°C	⑧ 奶瓶墊圈 milk bottle circle	1 個/pc	矽膠 Silicone 120°C~-20°C
② 吸乳罩墊片 breast pump cover slice	1 個/pc	矽膠 Silicone 120°C~-20°C	⑨ 防逆流矽膠管 anti-backflow silicate tube	1 個/pc	矽膠 Silicone 120°C~-20°C
③ 吸乳罩 breast pump cover	1 個/pc	PP 110°C~-20°C	⑩ 奶 瓶 milk bottle	1 個/pc	PP 110°C~-20°C
④ 手動專用蓋 cap	1 個/pc	PP 110°C~-20°C	⑪ 手動專用把手 manual breast pump handle	1 個/pc	PP 110°C~-20°C
⑤ 吸力環座 the base of sucking ring	1 個/pc	矽膠 Silicone 120°C~-20°C	⑫ 液態矽膠奶嘴 liquid silica pacifier	1 個/pc	矽膠 Silicone 120°C~-20°C
⑥ 吸力環 sucking ring	1 個/pc	PP 110°C~-20°C	⑬ 奶瓶中上蓋 milk bottle cover	1 組/set	PP 110°C~-20°C
⑦ 手動專用環座 manual breast pump base	1 個/pc	PP 110°C~-20°C	⑭ 奶瓶專用底座 milk bottle cover	1 個/pc	ABS 70°C~-20°C

◎ 清洗注意事項 / Clean & Sterilization

- 第一次使用前及每次使用後，請以溫水清洗所有零件，可將奶嘴、奶瓶、吸乳罩、吸乳罩墊片、防逆流矽膠管、奶瓶墊圈等配件，放入消毒鍋消毒。
- 使用前請清洗並消毒乾淨，使用後立即清洗並保持容器乾燥。
- 勿放於強光直接照射處，以免產品受損。
- 拆卸或組裝時請務必按照組裝順序將每個零件組裝完成，拆卸清洗時請小心--較小零件，避免遺失造成無法組裝。

- Before first use and every use must wash all the parts with warm water. The pacifier, milk bottle, breast pump cover, cover plate, anti-back flow silicate tube, milk bottle spacer and so on are sterilized.
- Please clean and sterilize the pump before using Clean it up immediately after using and keep the container dry.
- Please do not expose this product under sunshine.
- Please follow up the assembly or disassembly order completely. Please do not lose small parts when you clean it.